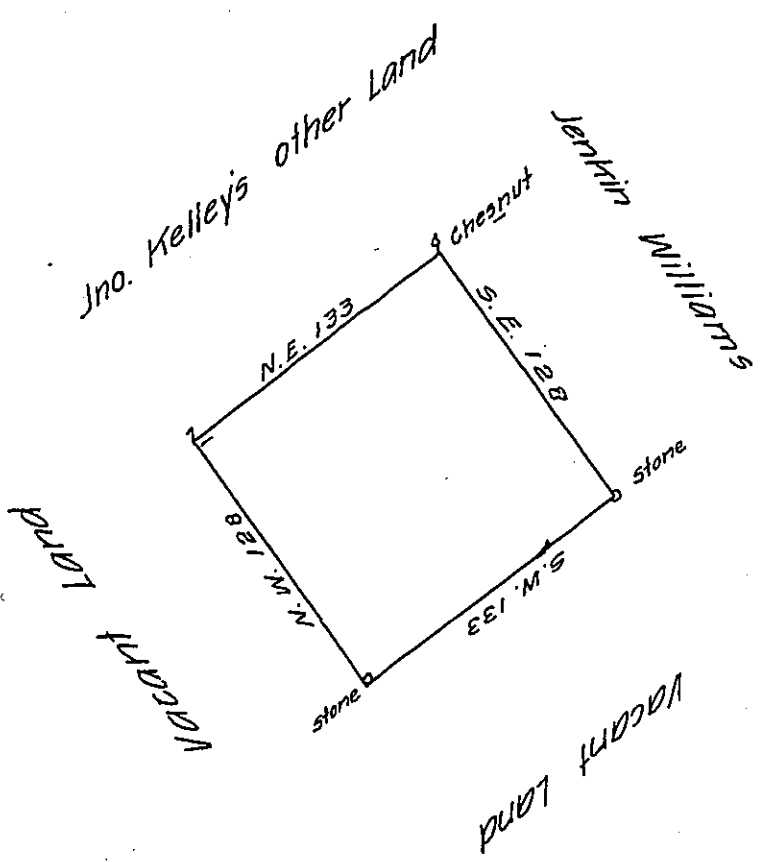


133
 128
 1064
 596

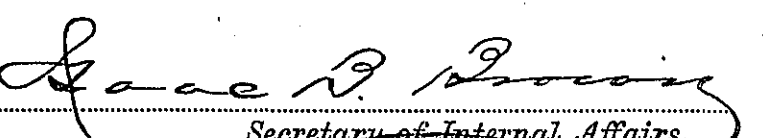


By virtue of a Warrant from the Proprietaries Dated
 the 20th of February 1733. Surveyed to John Kelley a certain Tract
 of Land situate in Hilton Township in the County of Bucks. Begin-
 ing at a Chestnut tree in the line of Jenkin Williams Land thence
 by the same South East one hundred and twenty Eight perches to
 a Corner stone. Thence by Vacant Land South West one hundred
 and thirty ^{three} perches to a Corner stone, thence by Vacant Land
 North West one hundred and twenty Eight perches to a post thence
 by his other land ^{of the sd Jno. Kelley} North East one hundred and thirty three
 perches to the place of Beginning Containing one hundred acres
 with usual Allowance of six p Cent

Surveyed March 27 1734

By Nicho scull Dep^t survey

IN TESTIMONY that the above is a copy of the original remaining on file in
 the Department of Internal Affairs of Pennsylvania, made
 conformably to an Act of Assembly approved the 16th day of
 February, 1833, I have hereunto set my Hand and caused
 the Seal of said Department to be affixed at Harrisburg,
 this seventh day of August 1905


 Secretary of Internal Affairs.